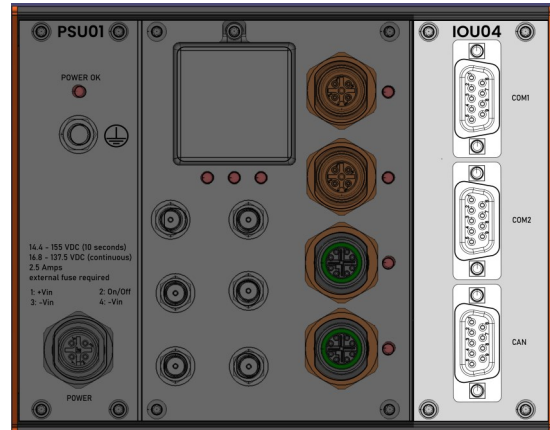


Serial interface extension unit (ModuCop) for edge applications in rail & busses

Features

- 1 slot (7 HP) extension unit for ModuCop Edge Computer
- 2x Serial Interface RS232/422/485; up to 256 kBaud
- 1x CAN Interface, up to 1 MBit/s
- SW configurable listen only mode (CAN) grants non-reactivity
- USB 2.0 Host Interface
- Local Micro Controller for SW abstraction
- EN 50155 compliant (integrated in ModuCop)



Introduction

The serial interface unit *IOU04* extends the functionality of the modular and flexibly expandable Edge Computer ModuCop MEC01. Fully integrated in ModuCop, IOU04 provides cost sensitive serial and CAN interfaces in addition to the various interface offerings of the base computer MEC01.

IOU04 enables ModuCop to connect to even more vehicle interfaces and is intended to be used in applications with the need to connect to sub-systems with CAN or Serial interface. The CAN interface can be configured to “listen only” mode, providing non-reactivity when connecting to the Train Communication Network (TCN).

IOU04 is powered by ModuCop integrated power supply and controlled by ModuCop CPU unit.

IOU04 is fully supported by Ci4Rail's Linux Microservices Platform, running on ModuCop.

Applications

- Condition-based / predictive maintenance
- Board Computer
- Fleet Management
- Advanced driver assistance system
- Ticketing System
- Security Gateway

Software

Fully supported in and integrated in Linux Microservices Platform (LMP)

Secure SW update for IOU04 integrated Micro Controller.

Specifications

Input/Output		S101-IOU04-00
Serial Interfaces	2x RS232/422/485 via DSUB-9p socket	
Serial IF Baudrate	Standard baudrates up to 256 kBaud	
CAN Interface	1x CAN via DSUB-9p socket	
CAN IF Baudrate	Up to 1 MBit/s	
CAN listen-only mode	SW configurable "listen-only" mode	
Power Input	Via ModuCop System	
Mechanics		
Dimensions	1 Slot (ModuCop System) Width: 35,3 mm; Depth: 61,2 mm Height: 111,5 mm	
Installation	ModuCop Extension Slot	
Environmental*		
Operating Temperature	-40...+70°C / 85°C (10min) (EN 50155:2017 - OT4 + ST1)	
Storage Temperature	-40...+85°C (EN 50155:2017)	
Humidity	95% (EN 50125-1:2014)	
Altitude	3000 m max. above sea level (EN 50125-1:2014, class AX)	
Shock / Vibration	EN 61373:2010; Cat. 1; Class B	
EMC Emission / Immunity	Rail Applications: EN 50121-3-2:2016; EMV 06 (2.0) Class SI; EN 301 489-1 (V2.2.3)	
Safety	Automotive Applications ECE R10 Rev.5	
Fire&Smoke	EN 50155:2017; EN 50153:2014+A1:2017; EN 50124-1:2017; EN 62368-1:2016; EN ISO 13732-1:2008	
Useful Life	Rail Applications: EN 45545-2:2013 + A1:2015; HL3	
Pollution Degree	Automotive Applications: ECE R118	
	20 years (EN 50155:2017, class L4)	
	PD2 (EN 50124-1:2017)	

* All environmental data apply for proper installation in ModuCop Edge Computer.

Order Information

The product can only be ordered as integrated I/O extension unit in ModuCop Edge Computer.

Please [contact](#) us for your specific configuration.

Accessories

N/A
